



# IMPACT 2022

CORNERSTONE ANNUAL MEETING & COUNCIL FORUM

## Civic Engagement in a Contentious Public Space

Presented by Keith Gaddie Ph. D, AIA, ABA  
The University of Oklahoma

# Civic Engagement in a Contentious Public Space

Keith Gaddie, Ph.D., AIA, ABA

Associate Dean

Presidential Professor of Architecture

Christopher C. Gibbs College of Architecture

The University of Oklahoma



London  
May 10-11 1941

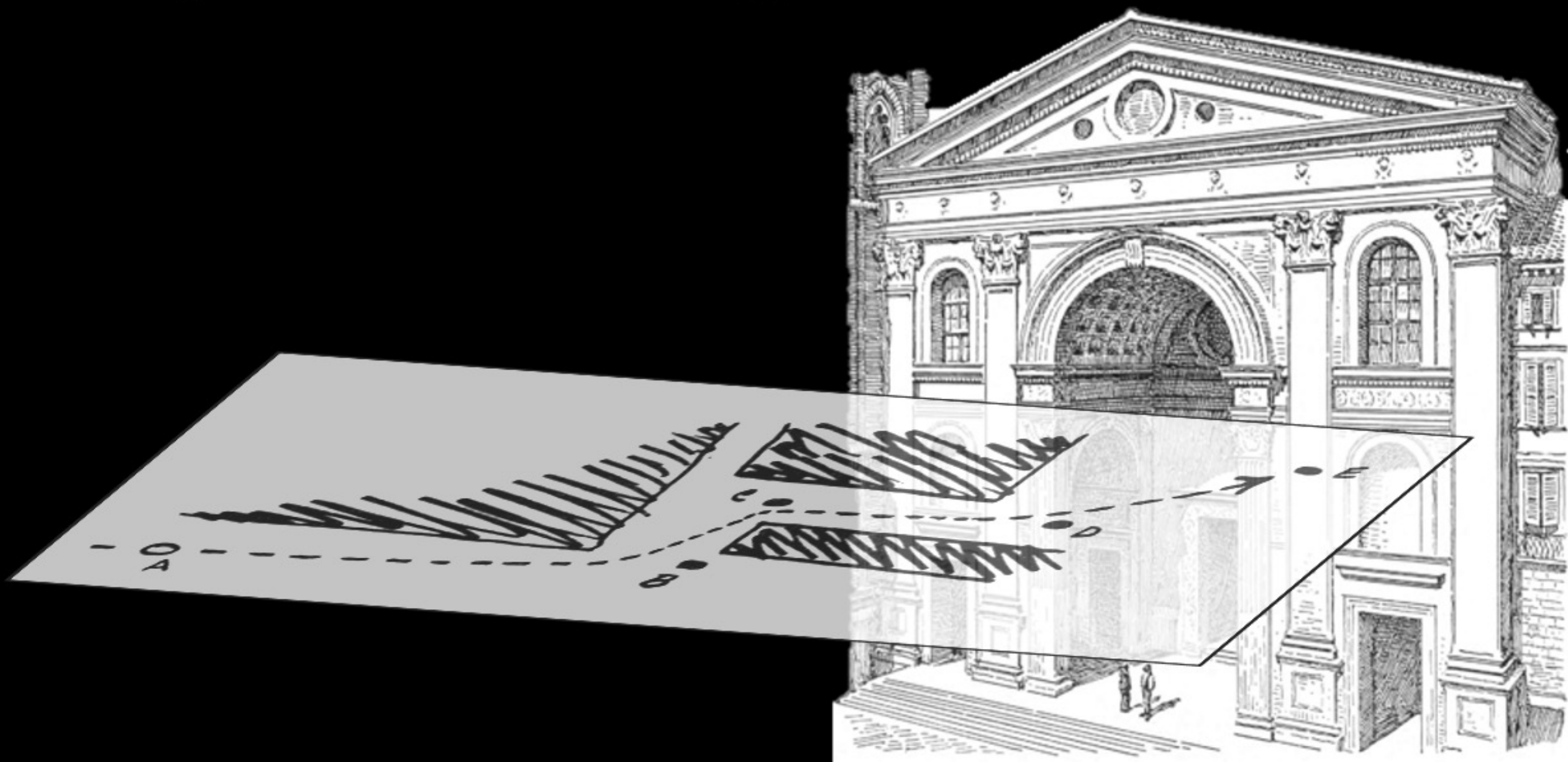






"We shape our buildings.  
Thereafter they shape us."  
*Winston Churchill, 1943*

# Building: Evidence of Technology



# Systems: Evidence of Technology

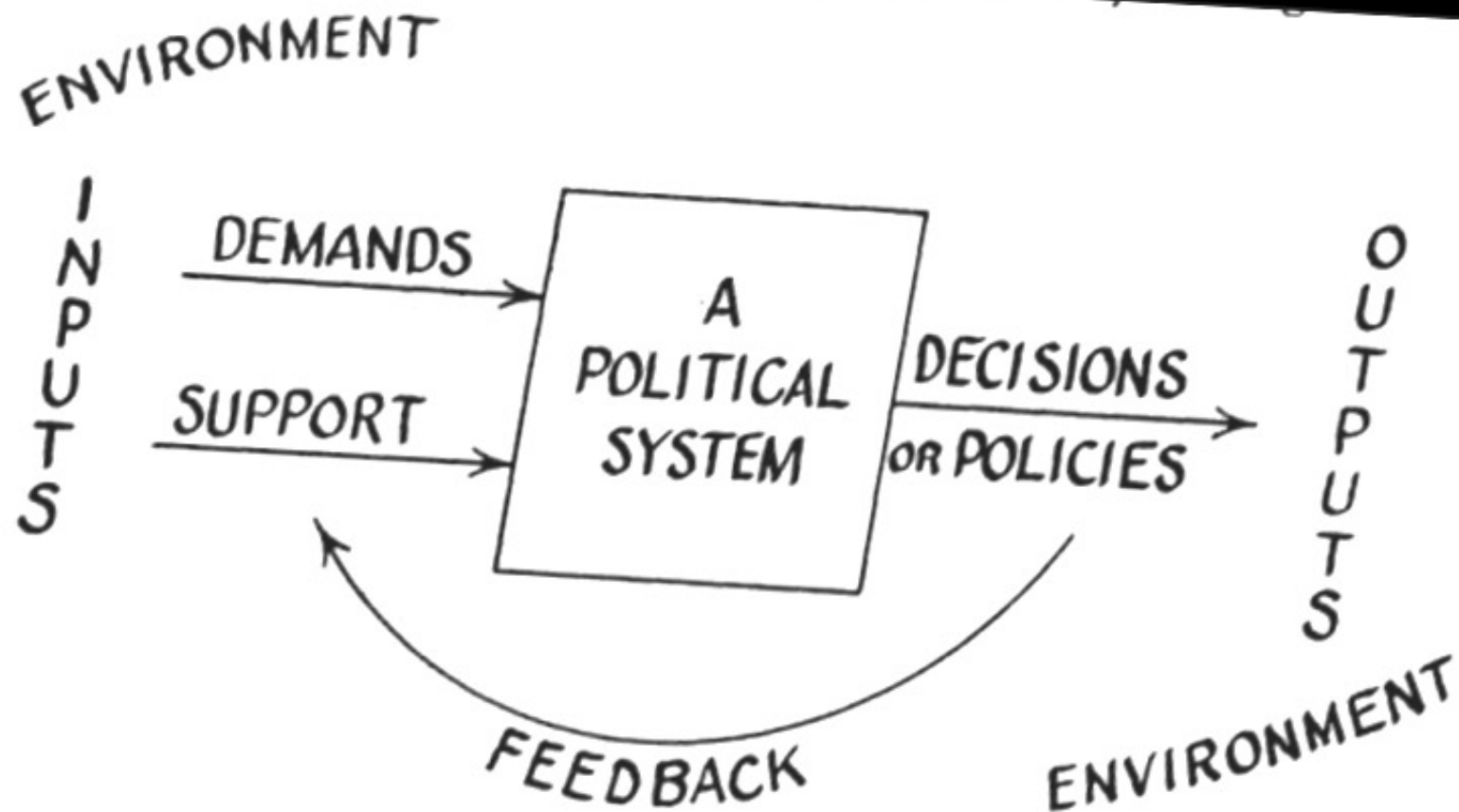


FIG. 1

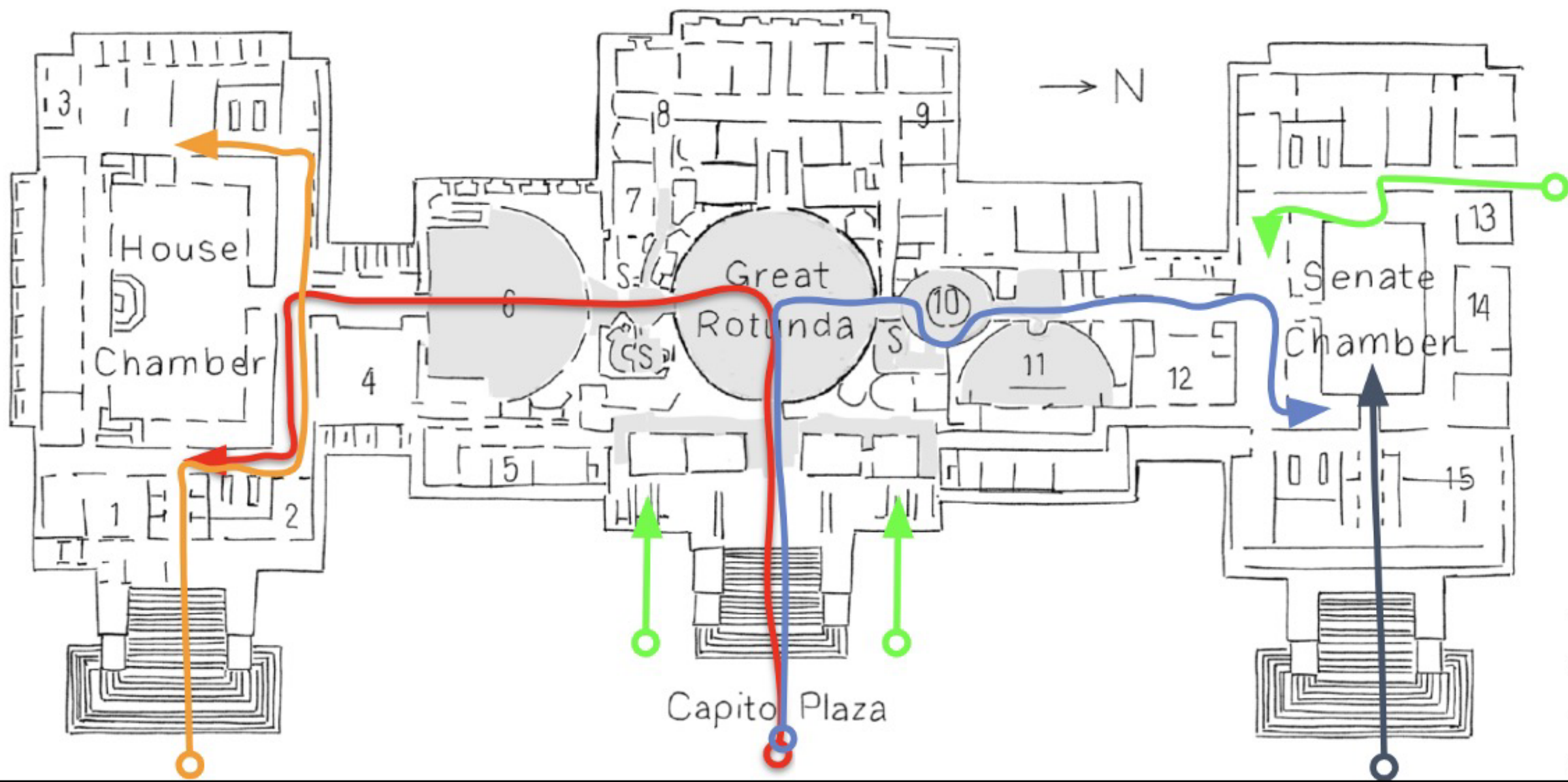


ARCHITECTURE IS A PHYSICAL MANIFESTATION OF  
OUR SYSTEMS AND OUR VALUES

What are those values in the  
American democracy?

How does architecture express them?

How does this express itself in the  
language of space?



Examples of permitted paths of entry into the Capitol before the securitization regime.



1976



# The Meaning of the Stone Temples













Greene County  
(Greensboro)

Photos by authors.



Phi  
Kappa  
Hall  
at  
The  
University  
of  
Georgia  
(1834)

Phi Kappa Hall, Athens, Ga.  
(photo by authors)



Campbell County  
(Fairburn)

Photos by authors.

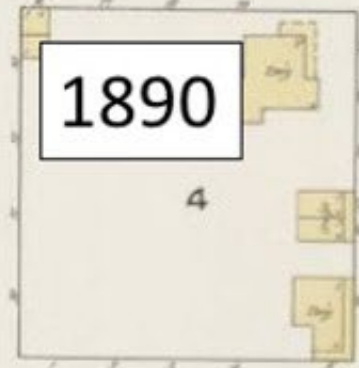
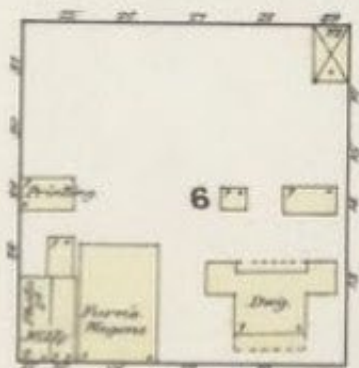
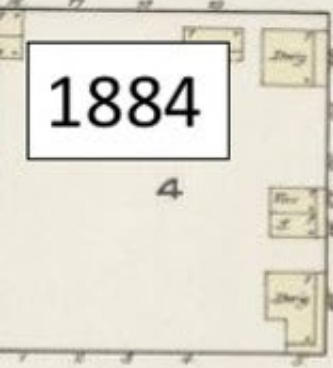
# The Right to Gather and the Right to Roam

# Squares

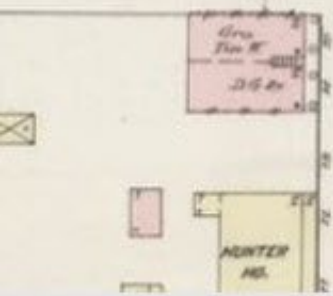
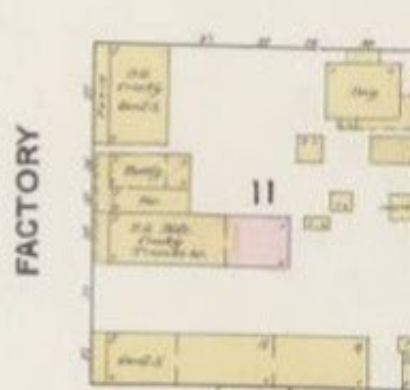
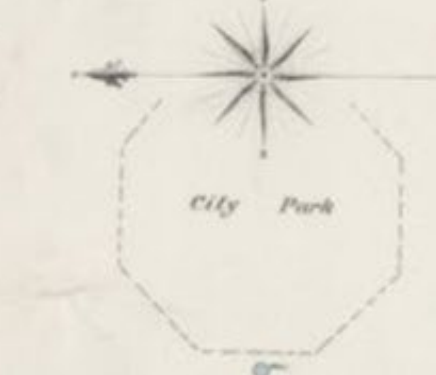
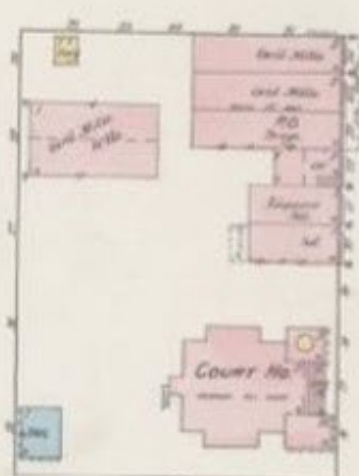
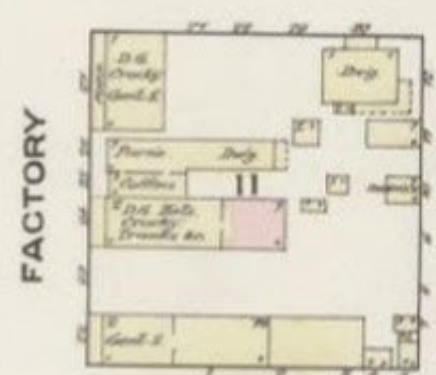
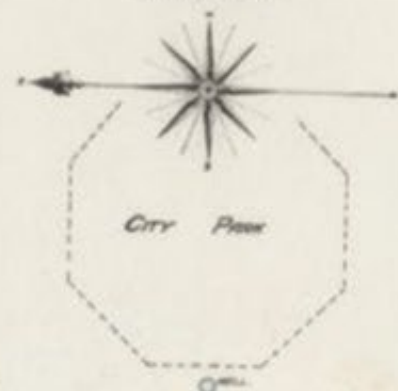
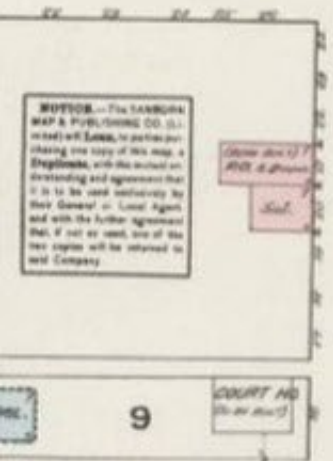
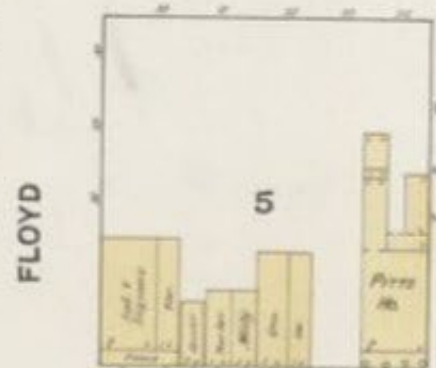


The Newton County Courthouse Square in Covington, before dawn (Photo by authors)

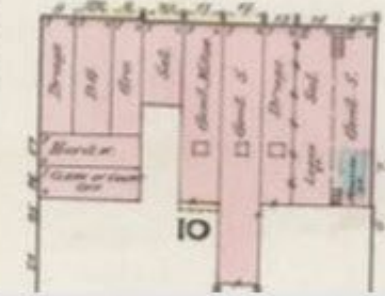
1884



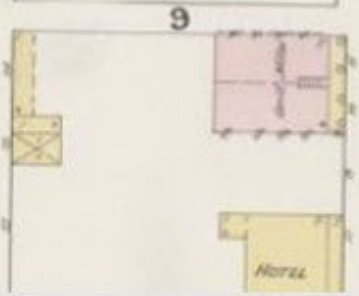
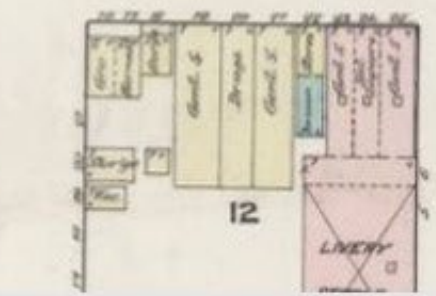
1890



RAIL ROAD



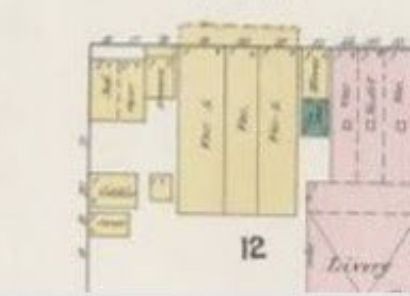
MONTICELLO



CLARK



MONTICELLO



# The Growth of the Newton County Courthouse Square in Covington, 1884-1916 (a & b)

Source: Sanborn Maps accessed at Library of Congress



1895

1916

The Growth of the Newton County Courthouse Square in Covington, 1884-1916 (c & d)  
 Source: Sanborn Maps accessed at Library of Congress





Inflection: 9/11



Smoke from the Pentagon is visible from I-395. (Photograph taken by the author.)

“It’s been an evolutionary process in security. When I came, there was no magnetometer, no barriers. You could take a visitor in and out of the Capitol. It changed security and sensitivity considerably.”

– *Senior member, GOP staff for the Veterans’ Affairs Committee in 2007*

“The lasting effect you can see all around. There’s a type of armament, the vests they’re wearing, the roads are blocked, the gas masks in the halls. . . Everything you see is gonna be around. . . Used to be, go back 25-30 years ago, you didn’t want to get into big brother’s watching you. Did you see all those (history of the Capitol) pictures they put up? Isn’t amazing there was no security, no barricades? I had the benefit of coming here in 1981, of living here when it was not an issue.”

– *Senior GOP Member of the House in 2007*

“The House floor looks much the same as it did in 1954. But there are subtle signs that this is a place far more attuned to danger than it once was. Behind the leather backs of the members’ chairs, there are sturdy metal plates to ward off bullets and impede the spread of a bomb blast. Beneath the chairs, in the brass cubbies once used for copies of bills, there are “escape hood” gas masks, constant reminders of what happened on September 11, 2001, and what could happen in the future”

– *Roig-Franzia (2004: W12)*

# Securitization of the Capitol Complex

## **Security Enhancements Impacting the Visitor Experience Post 9/11**

- permanent police podiums installed at building entrances and tunnels to Capitol
- building perimeter alarms installed
- additional security cameras installed
- temporary hydraulic barricades deployed as needed
- streets surrounding congressional office buildings closed
- additional vehicle barriers installed around Capitol and office buildings
- vehicles used to block access around Capitol and office buildings
- pedestrian access to office building parking garages curtailed
- DC National Guard temporarily deployed
- traffic regulations for Capitol Complex amended
- Capitol Visitor Center security design plan developed and approved
- Capitol Police bolstered by hundreds of additional officers
- 25,000 escape masks distributed across Capitol Complex
- Capitol tours adjusted with new guidelines for safety
- access cards issued to frequent visitors on official business in Capitol
- annunciators installed throughout House office buildings for emergency notifications
- screening procedures changed to require individuals to wait for belongings to go through x-ray machines prior to walking through the metal detectors
- officers repositioned at security checkpoints
- additional officers assigned to checkpoints
- officer at each checkpoint designated to instruct individuals on how to proceed
- public address system installed in Capitol










*Welcome to the United States Capitol*

# U.S. CAPITOL

## Visitor Center

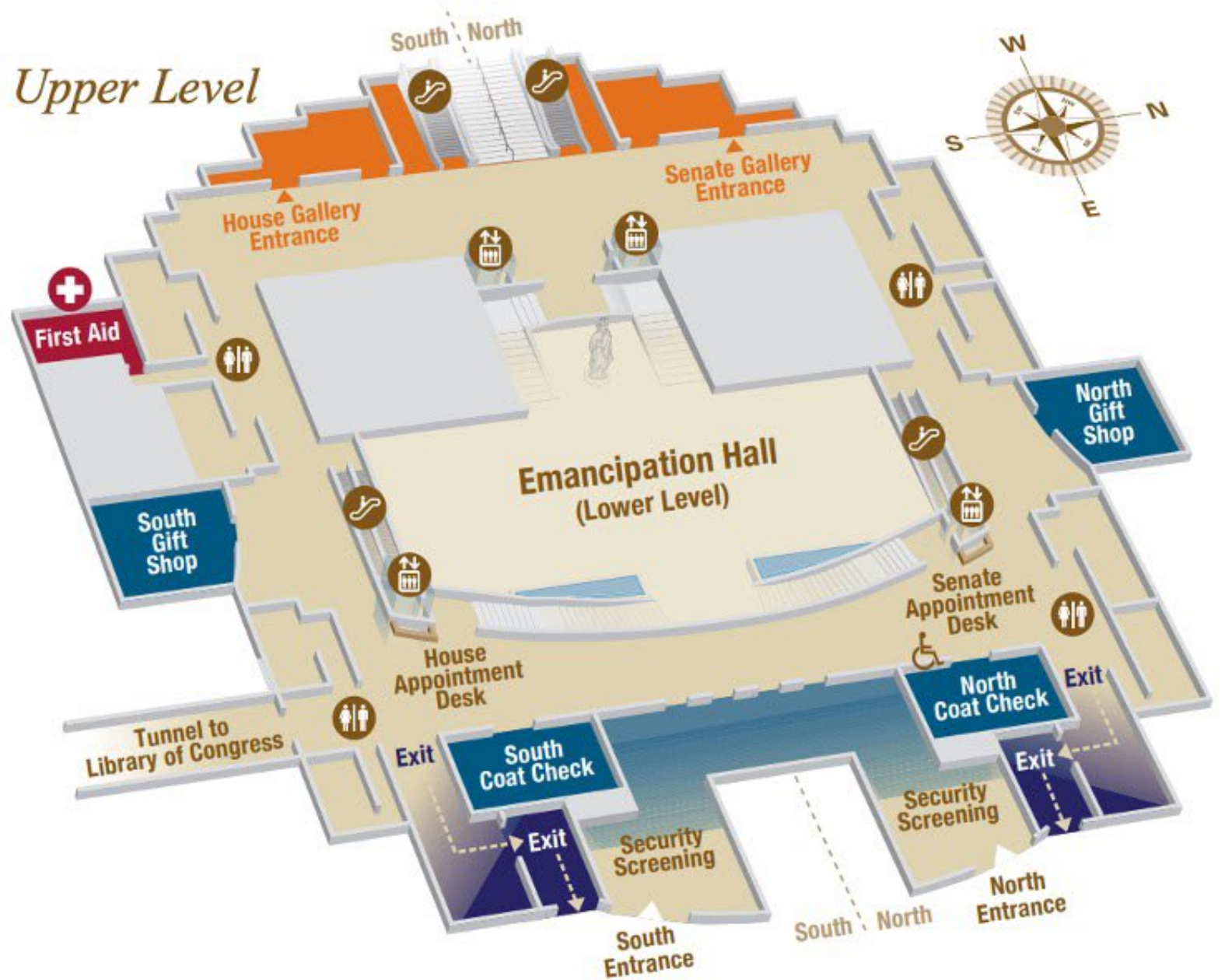
### Legend

-  Information Desks / Tour Passes
-  Escalator
-  Elevator
-  Restrooms

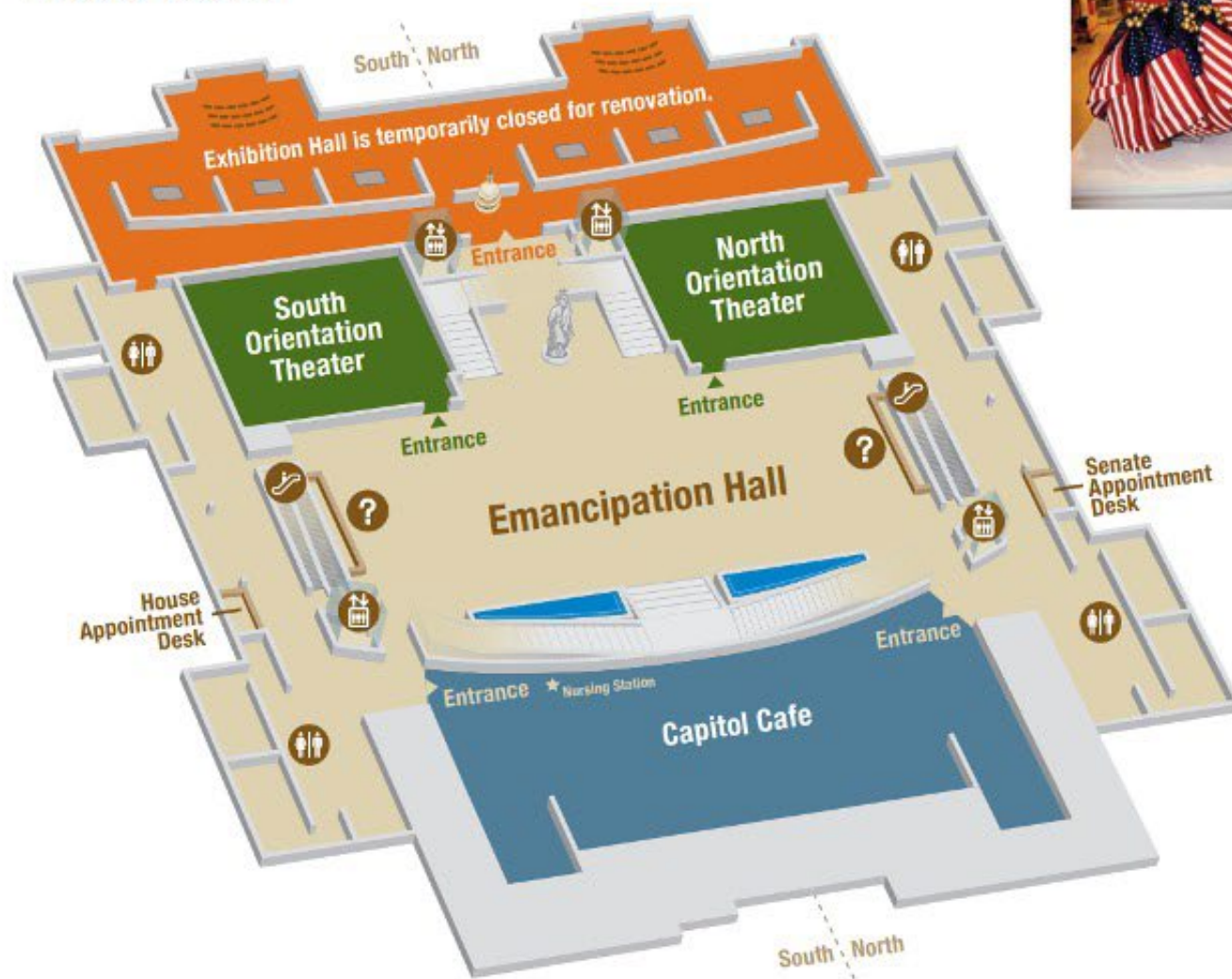
 Visitors may request wheelchairs at the North Coat Check, located to the right of the visitor entrance on the Upper Level, or from Capitol Visitor Center staff. All restrooms are accessible.

A nursing station is located on the south side of the Capitol Cafe on the lower level. Family restrooms are available near all eight restroom locations.

 Connect with free Wi-Fi  
CVC-Guest



## Lower Level



## GIFT SHOPS

### Gift Shops (Upper Level):

A unique selection of merchandise inspired by the Capitol's art and architectural treasures, fun and educational gifts, books, jewelry, and exciting custom-designed products make excellent souvenirs. 9 a.m. – 4:30 p.m., Monday – Saturday



## DINING

### Capitol Cafe (Lower Level):

Freshly-made soups, salads, specialty entrées, pizzas, sandwiches, desserts, and beverages reflect the diverse bounty of America.

8:30 a.m. – 4 p.m., Monday – Saturday

**Capitol visitor policies are designed to keep visitors and staff safe and secure and to preserve the collections, facilities, and historic building and grounds for generations to come.**

Before entering the Capitol Visitor Center, all visitors are screened by a magnetometer and all items that are permitted inside the building are screened by an x-ray device. The following items are strictly prohibited in the Capitol, including the Capitol Visitor Center:

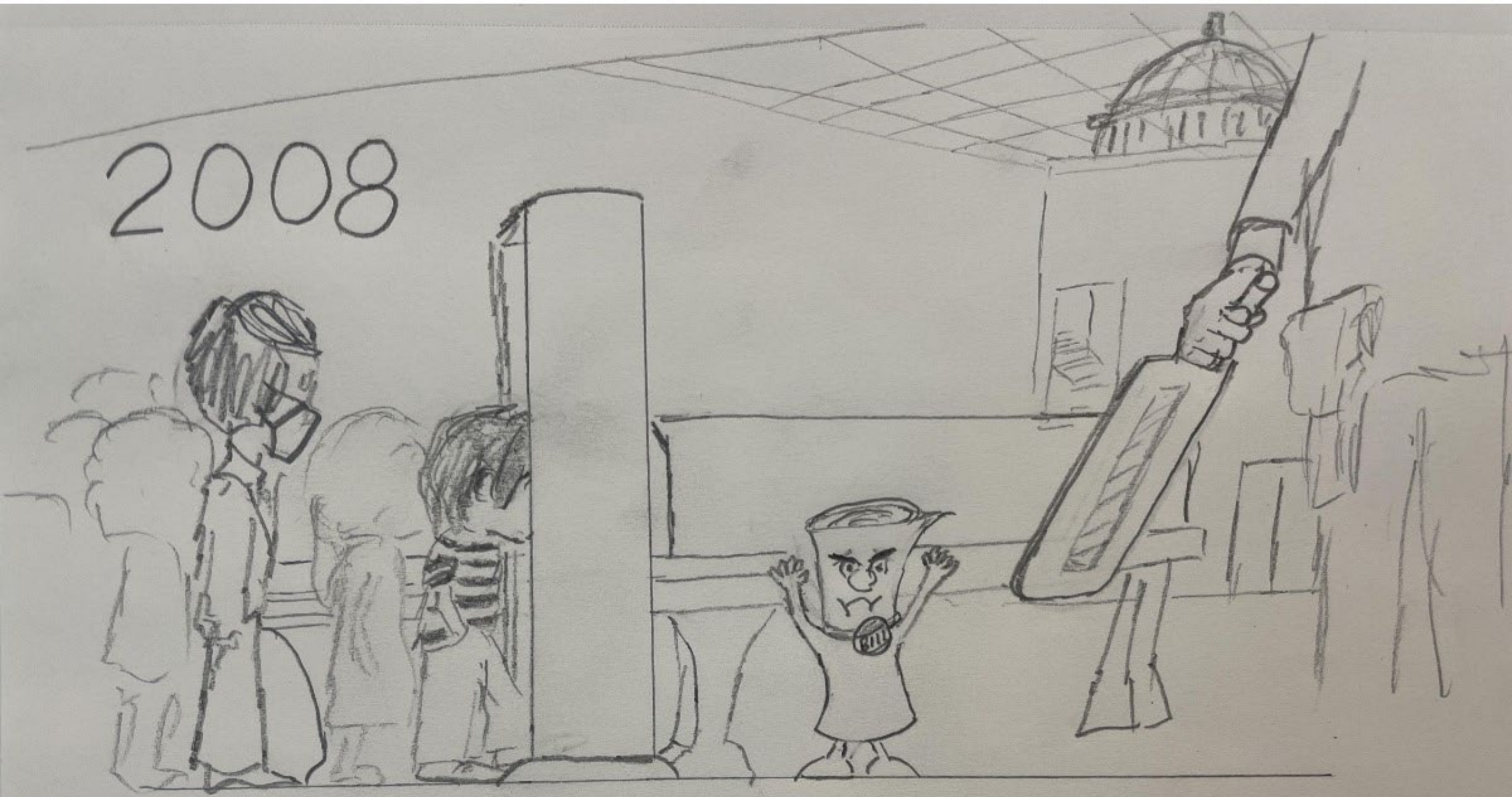
- Liquid, including water
- Food or beverages of any kind, including fruit and unopened packaged food
- Aerosol containers
- Non-aerosol spray (Prescriptions for medical needs are permitted.)
- Any pointed object, e.g. knitting needles and letter openers (Pens and pencils are permitted.)
- Any bag larger than 18" wide x 14" high x 8.5" deep
- Electric stun guns, martial arts weapons or devices
- Guns, replica guns, ammunition, and fireworks
- Knives of any size
- Mace and pepper spray
- Razors and box cutters



Please note that the U.S. Capitol Police are authorized to make exceptions if a prohibited item is determined to be necessary and required to serve child care, medical or other special needs. If you have questions, please call the Office of Congressional Accessibility Services at 202.224.4048.



2008



# The Security Dilemma

Have We Lost Our Public Space and therefore our Democracy?



Security  
Portal  
Peach  
County  
Courthouse  
Fort Valley  
Georgia

Phi Kappa Hall, Athens, Ga.  
(photo by authors)





Security  
Portal  
Peach  
County  
Courthouse  
Fort Valley  
Georgia  
(reverse)

Phi Kappa Hall, Athens, Ga.  
(photo by authors)



**Security  
Portal  
Lee County  
Courthouse  
Leesburg  
Georgia**

Phi Kappa Hall, Athens, Ga.  
(photo by authors)



**Security  
Portal  
Pickens  
County  
Courthouse  
Jasper  
Georgia**

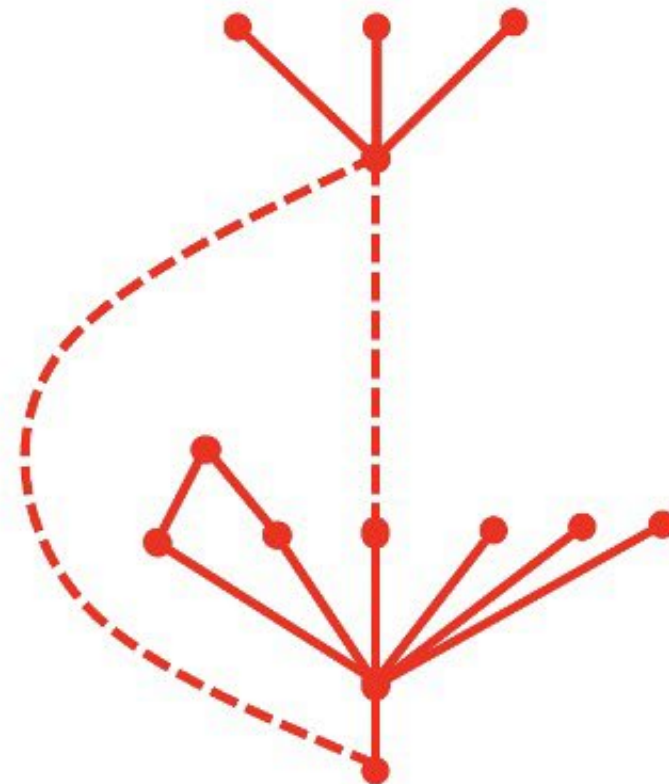
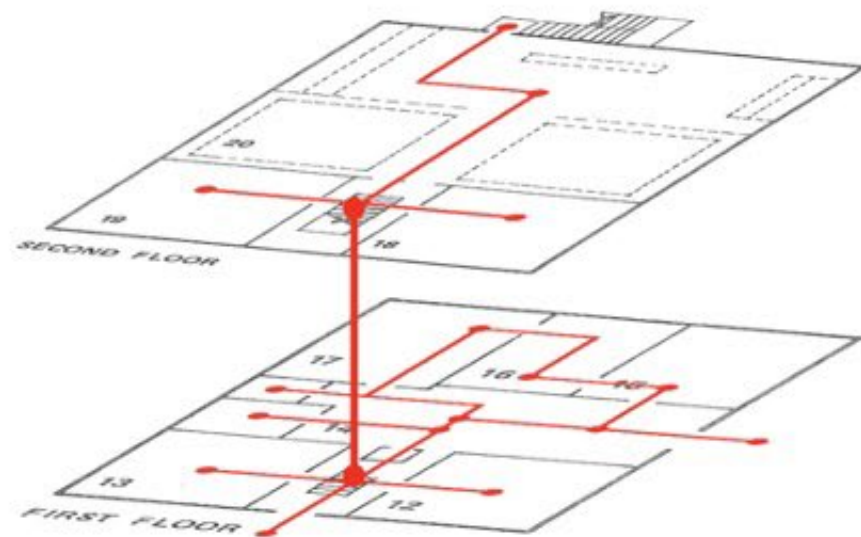
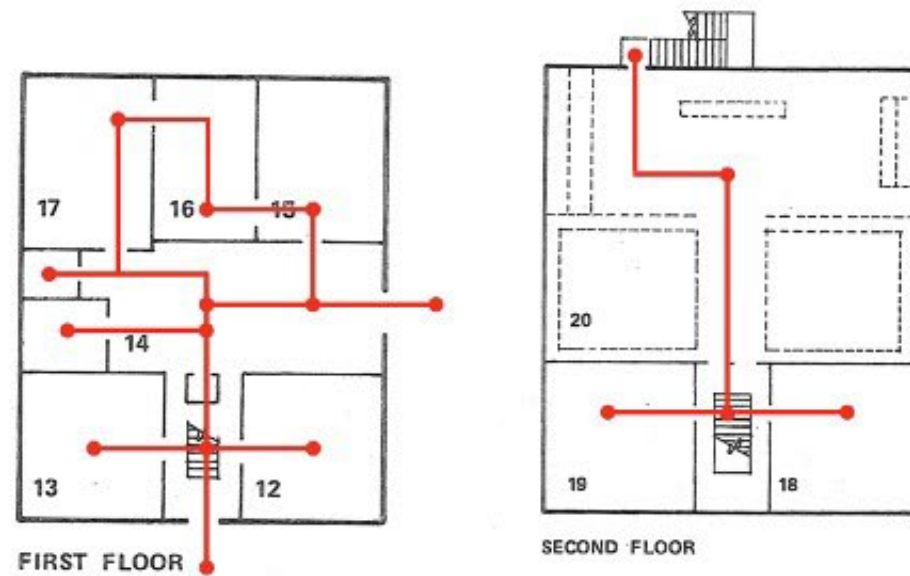
# Mapping Out Public Space Flows



Chattahoochee County Court House  
Cusseta, Ga.



Chattahoochee County Court House  
Cusseta, Ga.



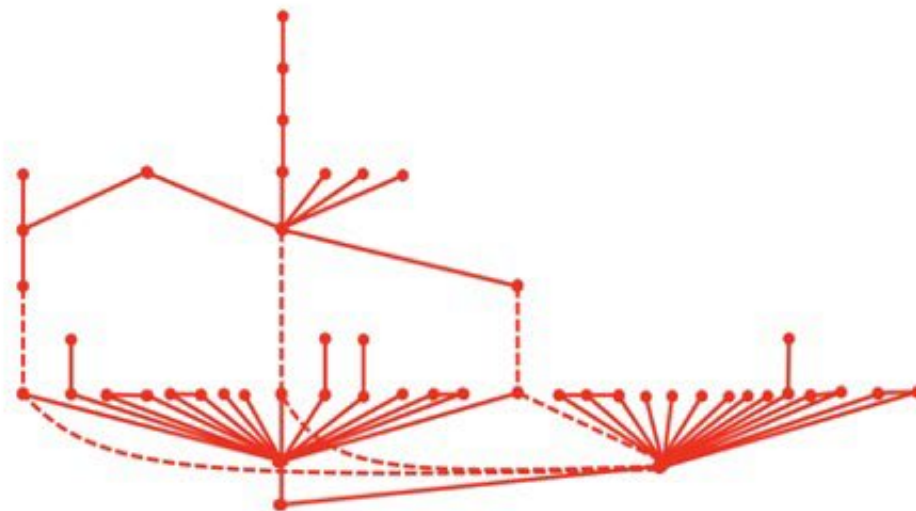
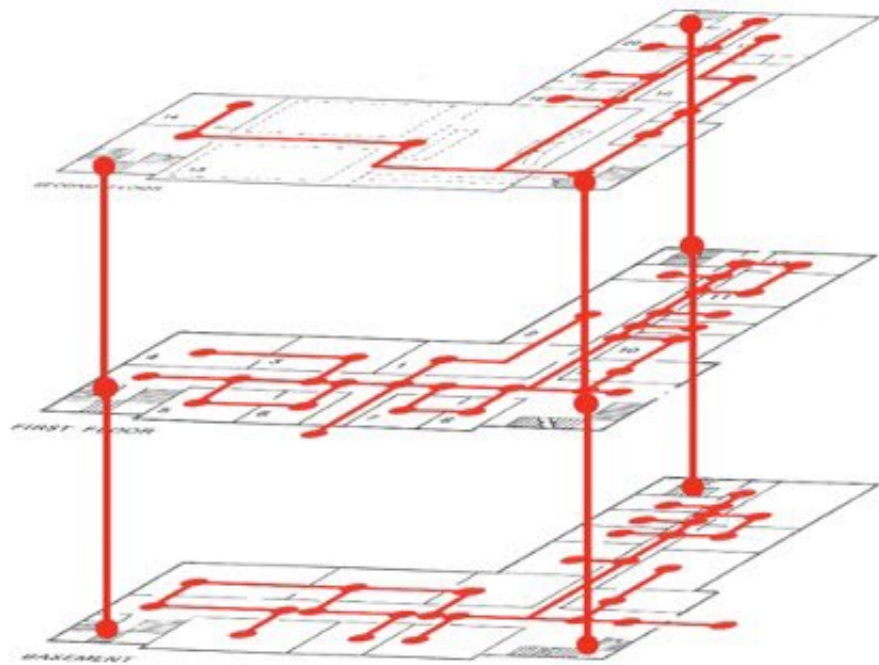
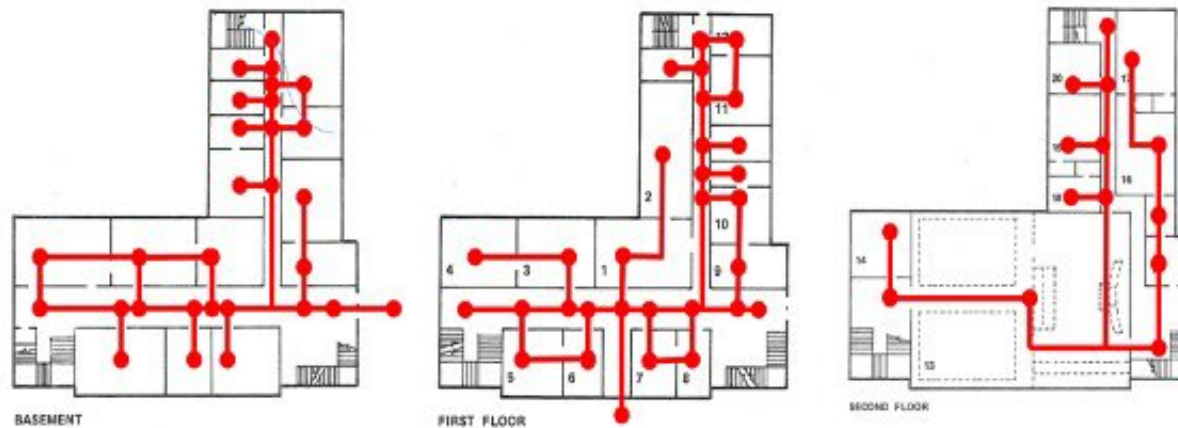
$K = 13$   
 $MD = 2.583$   
 $RA = .288$   
 $RAA = 1.009$



PICKENS COUNTY COURT HOUSE

2-4-353

Beautiful new Marble Court House of Pickens County - Jasper, Ga.

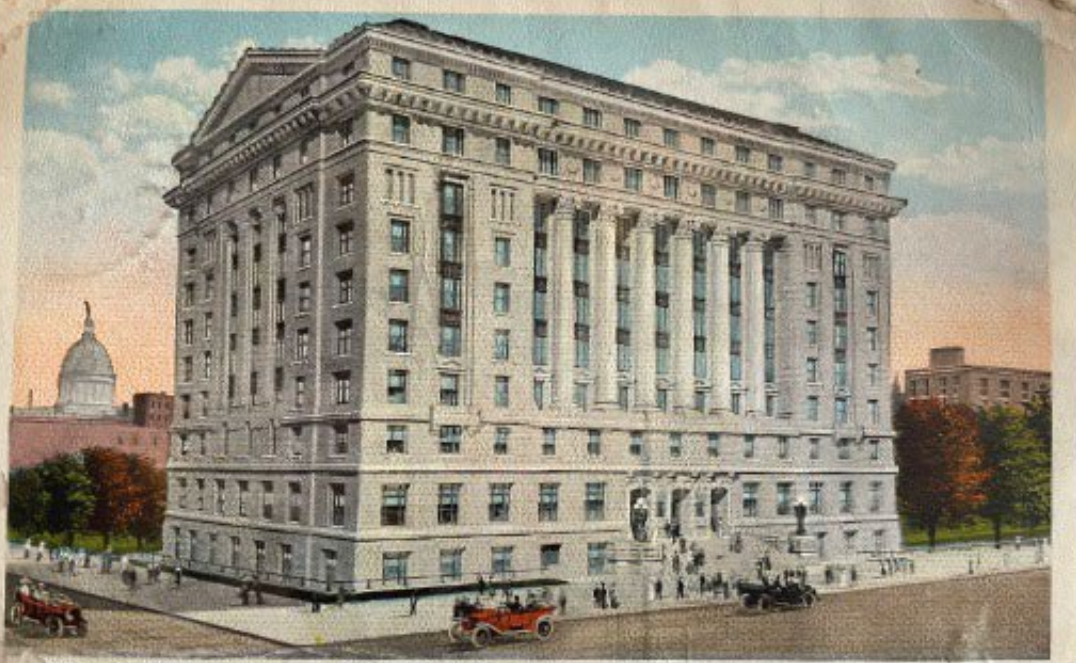


$K = 49$   
 $MD = 3.23$   
 $RA = .149$   
 $RAA = .854$

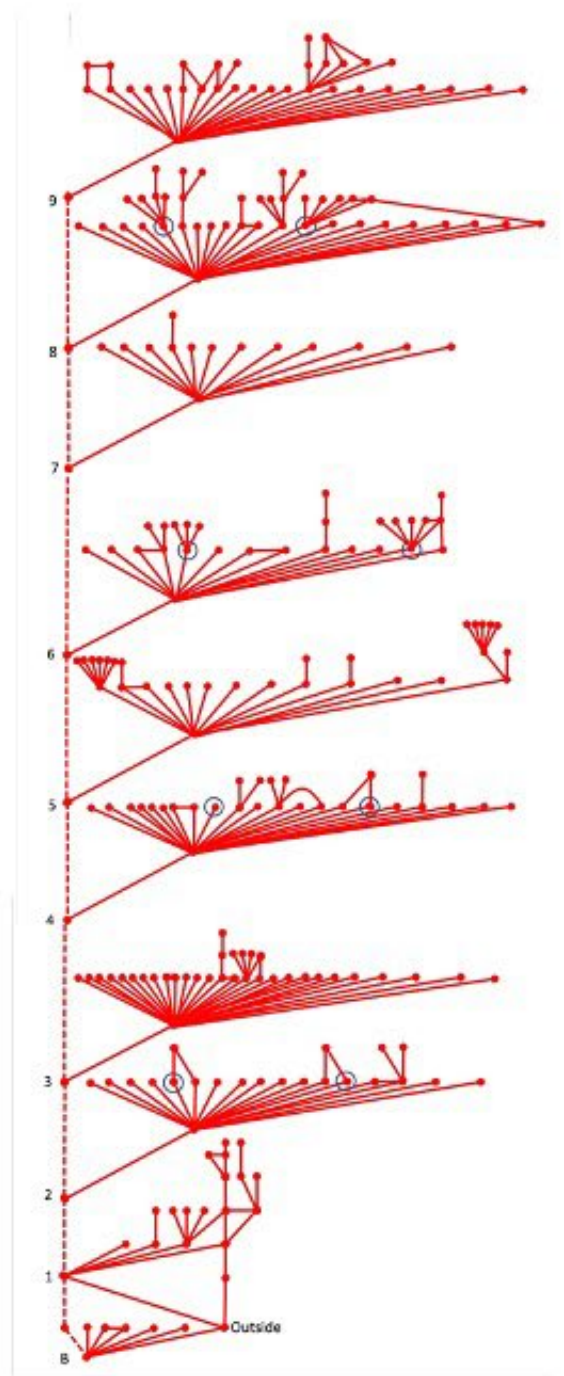
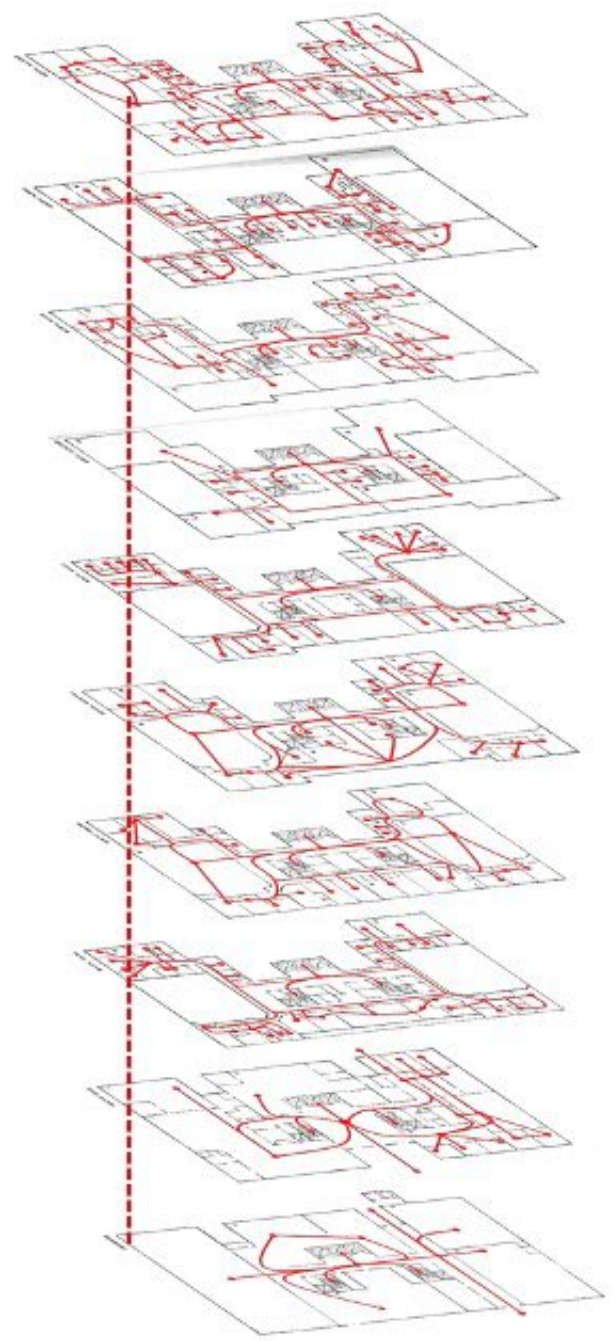




NEW FULTON COUNTY COURT HOUSE, ATLANTA, GA.



EW FULTON COUNTY COURT HOUSE, ATLANTA, GA.



Considering January 6 (and a preview)

GATHERING STORM President Trump's supporters rally outside the Capitol building as Congress was in the process of signing off on President-elect Joe Biden and Vice President-elect Kamala Harris' electoral victory.

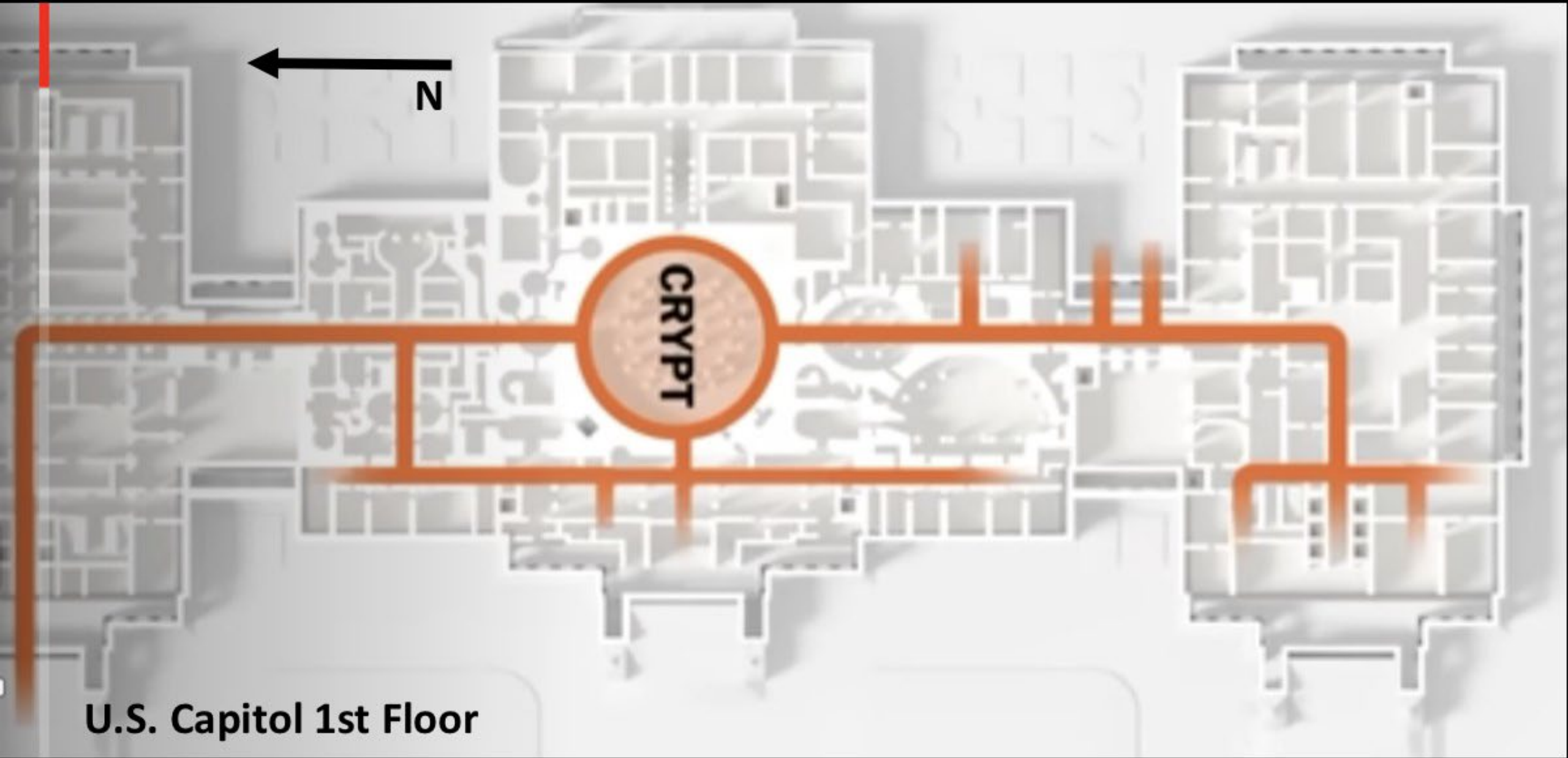
PHOTO BY TAYFUN COSKUN/ANADOLU AGENCY VIA GETTY IMAGES





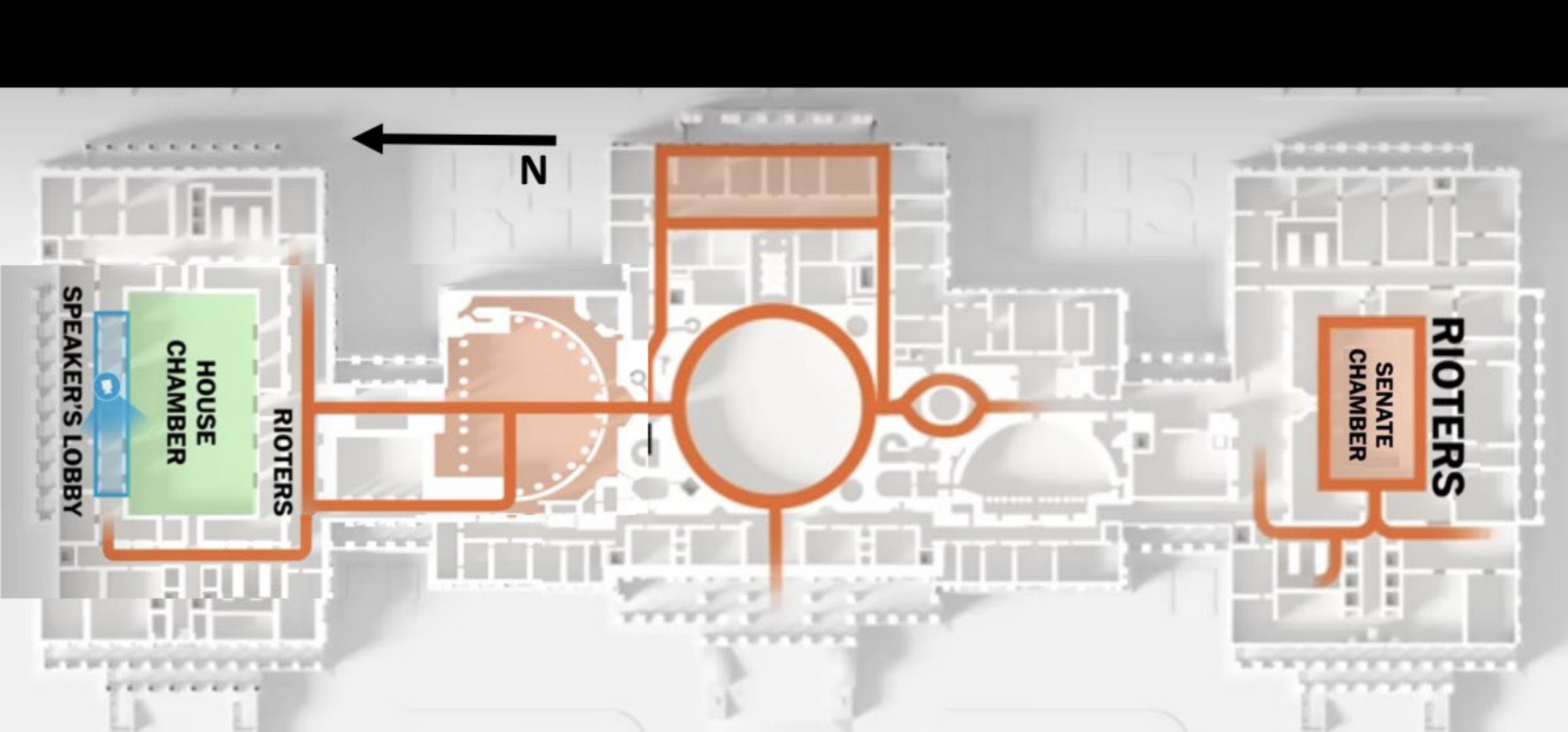






**U.S. Capitol 1st Floor**





**RIOTERS**

SENATE  
CHAMBER

RIOTERS

HOUSE  
CHAMBER

SPEAKER'S LOBBY

N

**U.S. Capitol 2d Floor**

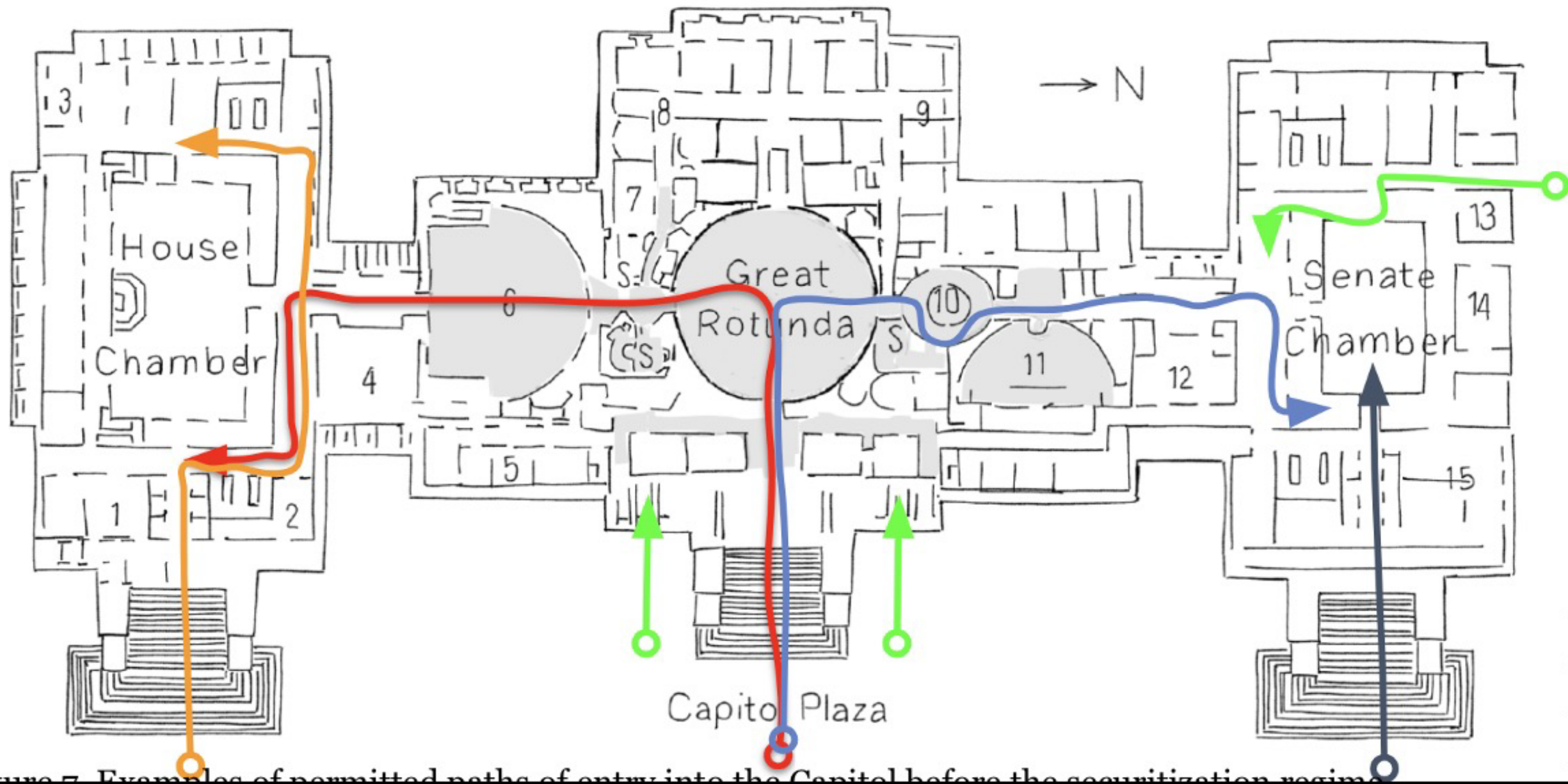


Figure 7. Examples of permitted paths of entry into the Capitol before the securitization regime.







Prospectus Prepared for The University Press of Kentucky

ONE-SIX: CONFLICT, FREEDOM, AND SECURITY IN DEMOCRATIC SPACE

Jocelyn J. Evans, *The University of West Florida*

Keith Gåddie, *The University of Oklahoma*

1. Narrative description of the proposed book's themes, arguments, goals, place in the literature, and expected audience

This book examines the events of January 6, 2021, as a convergence of challenges in American national identity, contestation for the moral nation and the public space, and the tensions of securitization versus free movement in the American republic. We engage the event and its location as a vehicle to consider the challenges of balancing liberty, security, and affirmative affect in the public space, leaving conspiratorial and criminal questions for others to address.

The January 6, 2021, assault on the U.S. Capitol rattled the foundations of American democracy. On that afternoon, several thousand protesters unwilling to accept the results of the 2020

What Is Our Public Square?

## US Capitol Police tells lawmakers that razor wire fencing should remain until September



By [Zachary Cohen](#), CNN  
Updated 10:54 AM ET, Fri February 19, 2021







# Questions?

**Keith Gåddie**

Associate Dean

Christopher C. Gibbs College of Architecture

The University of Oklahoma

[rkgaddie@ou.edu](mailto:rkgaddie@ou.edu)

**THANK  
YOU!**

CORNERSTONE ANNUAL MEETING & COUNCIL FORUM

**IMPACT**  **2022**